

Ngā Hau e Whā o Paparāangi Society Incorporated

30 LADBROOKE DRIVE, NEWLANDS, PO BOX 26-049, NEWLANDS 6442 • WWW.NHEWOP.ORG.NZ

He mihi manaakitanga ki a koutou katoa!

Hōtoke/winter is over and Kōanga/spring has begun! We can look forward to warmer weather now! Thank you to those who were able to support our Annual Hui-ā-tau/AGM, a committee was elected and the first Komiti hōu hui will take place this month – Mahuru/September.

The Matariki Hāngī lunch for Mary Potter Hospice and IHC/IDEA services was a great success and enjoyed by all. Thank you to our Hāngī crew for a delicious meal!!!



"Waiata time with IHC & NIS"

Our Maara wharepārekereke/Garden Nursery project is nearly complete and the huawhenua/vegetables in the maara/garden are ready to harvest

Our Rongoa workshop last weekend was fantastic, everyone learned a lot, thank you Amanda, Vanessa & Netti for sharing your matauranga with the group.

Kaua e wareware/don't forget, elections are now in Whiringa-ā-nuku/October, so enroll to vote and have your say! You will still be able to cast your vote here at NHEWOP, for more information go to: www.elections.nz



"NHEWOP Rongoa Workshop"

Ngā Hau e Whā o Paparāangi Society Incorporated

30 LADBROOKE DRIVE, NEWLANDS, PO BOX 26-049, NEWLANDS 6442 • WWW.NHEWOP.ORG.NZ

“Ma te tini, ka kaa ake te ahi” – By the contributions of many, the home fire will be kept alight!



Mahuru/September

Tuesday 1 – Open day, 10am – 2pm

Wednesday 2 – CVNZ volunteers, Whakatō rākau/Planting, 9am – 2pm



“Natives from WCC for planting”

Thursday 3 - Open day, 10am – 2pm/ Te Ataarangi Reo/Kura pō, 6pm – 8pm

Sunday 6 – Private Booking, 7am – 6pm

Tuesday 8 - Open day, 10am – 2pm/ Rāranga weaving group, 6pm – 9pm



“Putiputi raranga”

Ngā Hau e Whā o Paparāangi Society Incorporated

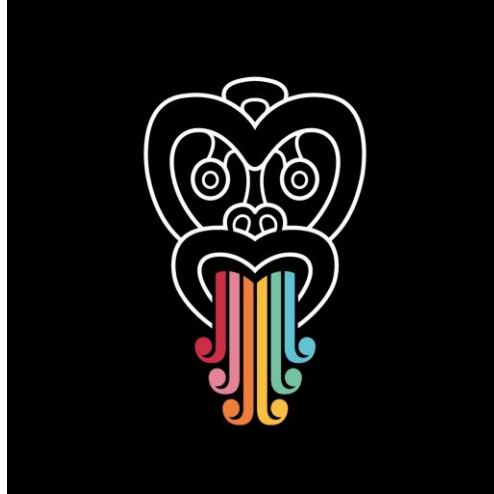
30 LADBROOKE DRIVE, NEWLANDS, PO BOX 26-049, NEWLANDS 6442 • WWW.NHEWOP.ORG.NZ

Wednesday 9 - NHEWOP Komiti hōu Hui, **6.30pm – 8.30pm** bring a plate to share!

Thursday 10 – Open day, **10am – 2pm**/ Te Ataarangi Reo/Kura pō, **6pm – 8pm**

Friday 11/Tuesday 15 – Private Booking, **3pm – 11am**/ Rāranga weaving group, **6pm – 9pm**

Monday 14/Sunday 20 – “Te Wiki o te reo Māori”



“Kia kaha – Korero!”

Tuesday 22 - Open day, **10am – 2pm**/ Rāranga weaving group, **6pm – 9pm**

Wednesday 23 – NHEWOP Subcommittee Hui, **6.30pm – 8.30pm**

Thursday 24 - Open day, **10am – 2pm**/ Te Ataarangi Reo/Kura pō, **6pm – 8pm**

Saturday 26 – Private booking, **8am – 6pm**



“NIS students repotting Rengarenga”

Ngā Hau e Whā o Paparāangi Society Incorporated

30 LADBROOKE DRIVE, NEWLANDS, PO BOX 26-049, NEWLANDS 6442 • WWW.NHEWOP.ORG.NZ

Regular Bookings

Mondays – Rangatahi kapa haka **6.30pm-8.30pm** – Open to rangatahi 10+ years old. Bring a plate to share. **Cancelled during Level 2+, will restart Level 1**

Tuesdays – Open weave night, **6.30pm-8.30pm** - Bring a plate to share and your weaving project to work on

Wednesdays – NHEWOP Committee Meetings – Next hui is **Wednesday 9 Mahuru, 6.30pm-8.30pm**. Open to those interested in the behind the scenes work at NHEWOP

Thursdays – Te Ataarangi Reo Course, **6pm-8pm**, Open to those who have registered

Sunday – Te Whare Tū taua, Mau Taiaha practice, 1pm-2pm
Open to tāne (Men) only who have completed a Mau Taiaha Wānanga

Tuesdays & Thursdays – Open drop-in days – 10am to 2pm



"Drop in for a cuppa"

Venue available – Do you have a great craft or activity that you would like to share with our community? Do you have a special event coming up? we have a great venue that may suit your needs, go to our website – www.nhewop.org.nz or you can contact us via email on – kaitari@nhewop.org.nz



"A look inside our space"

Ngā Hau e Whā o Paparāangi Society Incorporated

30 LADBROOKE DRIVE, NEWLANDS, PO BOX 26-049, NEWLANDS 6442 • WWW.NHEWOP.ORG.NZ

Ngā Hau e Whā o Paparāangi Whare pārekereke (Nursery on Jay Street) – Do you have an interest in planting and propagating native plants? Would you like to learn? We are looking for volunteers to help out at our Whare pārekereke (Nursery) situated next to the Northern Community Gardens on Jay Street, Newlands. We have a community space which caters to schools and community organisations and we have a mātauranga space which caters to NHEWOP's Planting project, educating kids about plants and specializes in Natives used in Māori arts such as Rāranga, Rongoā and Kai. For more information contact us on - kaitari@nhewop.org.nz



"Work station inside the whare pārekereke"

Ngā Hau e Whā o Paparāangi Resilience – Are you interested in making Newlands a resilient community? NHEWOP is working with the Newlands Resilience group to ensure Newlands and the marae are ready in an emergency! If you are interested in helping us be more prepared or would like to learn more contact us - kaitari@nhewop.org.nz



"Your personal Grab & Go bag"

Do you have any ideas for programs that you would like to see offered from Ngā Hau e Whā o Paparāangi marae that may enhance and benefit our community of Newlands? Let us know by email - kaitari@nhewop.org.nz

Ngā Hau e Whā o Paparāangi Committee

Ngā Hau e Whā o Paparāangi Society Incorporated

30 LADBROOKE DRIVE, NEWLANDS, PO BOX 26-049, NEWLANDS 6442 • WWW.NHEWOP.ORG.NZ

